



# Demographic and Income Profile

Prepared by Tri-Oak Commercial Group

DG - Aberdeen, MS  
317 Ushy 45  
Aberdeen, MS 39730

Latitude: 33.815102  
Longitude: -88.546616  
Radius: 1.0 mile

Site Type: Radius

Summary	2000	2008	2013
Population	3,620	3,520	3,482
Households	1,310	1,302	1,298
Families	886	856	838
Average Household Size	2.59	2.53	2.51
Owner Occupied HUs	821	811	801
Renter Occupied HUs	489	491	498
Median Age	34.0	35.8	36.9

Trends: 2008-2013 Annual Rate	Area	State	National
Population	-0.22%	0.83%	1.23%
Households	-0.06%	1.02%	1.26%
Families	-0.42%	0.75%	1.05%
Owner HHs	-0.25%	0.84%	1.07%
Median Household Income	1.56%	1.92%	3.19%

Households by Income	2000		2008		2013	
	Number	Percent	Number	Percent	Number	Percent
< \$15,000	520	39.4%	466	35.8%	445	34.3%
\$15,000 - \$24,999	213	16.1%	208	16.0%	193	14.9%
\$25,000 - \$34,999	207	15.7%	165	12.7%	150	11.5%
\$35,000 - \$49,999	180	13.6%	234	18.0%	256	19.7%
\$50,000 - \$74,999	141	10.7%	153	11.7%	162	12.5%
\$75,000 - \$99,999	25	1.9%	40	3.1%	55	4.2%
\$100,000 - \$149,999	23	1.7%	22	1.7%	24	1.8%
\$150,000 - \$199,000	8	0.6%	9	0.7%	7	0.5%
\$200,000+	3	0.2%	6	0.5%	7	0.5%
Median Household Income	\$20,851		\$23,740		\$25,654	
Average Household Income	\$27,518		\$31,312		\$33,204	
Per Capita Income	\$10,383		\$12,127		\$13,010	

Population by Age	2000		2008		2013	
	Number	Percent	Number	Percent	Number	Percent
0 - 4	250	6.9%	251	7.1%	249	7.2%
5 - 9	311	8.6%	250	7.1%	246	7.1%
10 - 14	335	9.3%	298	8.5%	276	7.9%
15 - 19	297	8.2%	283	8.0%	261	7.5%
20 - 24	208	5.7%	231	6.6%	235	6.7%
25 - 34	454	12.5%	415	11.8%	408	11.7%
35 - 44	455	12.6%	415	11.8%	377	10.8%
45 - 54	390	10.8%	412	11.7%	418	12.0%
55 - 64	281	7.8%	344	9.8%	388	11.1%
65 - 74	244	6.7%	236	6.7%	250	7.2%
75 - 84	238	6.6%	206	5.9%	193	5.5%
85+	158	4.4%	177	5.0%	181	5.2%

Race and Ethnicity	2000		2008		2013	
	Number	Percent	Number	Percent	Number	Percent
White Alone	1,268	35.0%	1,151	32.7%	1,128	32.4%
Black Alone	2,324	64.2%	2,340	66.5%	2,326	66.8%
American Indian Alone	3	0.1%	3	0.1%	3	0.1%
Asian Alone	6	0.2%	6	0.2%	6	0.2%
Pacific Islander Alone	3	0.1%	3	0.1%	3	0.1%
Some Other Race Alone	1	0.0%	1	0.0%	1	0.0%
Two or More Races	16	0.4%	16	0.5%	16	0.5%
Hispanic Origin (Any Race)	18	0.5%	17	0.5%	17	0.5%

Data Note: Income is expressed in current dollars.

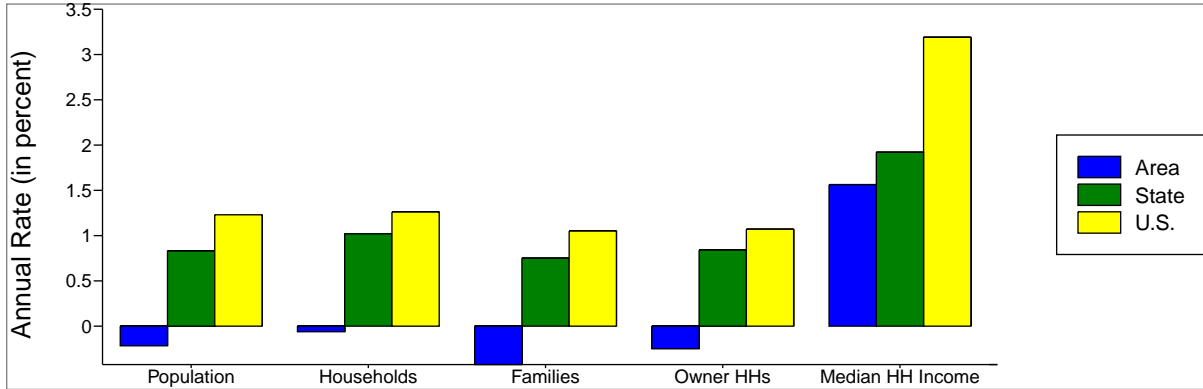
Source: U.S. Bureau of the Census, 2000 Census of Population and Housing. ESRI forecasts for 2008 and 2013.

DG - Aberdeen, MS  
317 Ushy 45  
Aberdeen, MS 39730

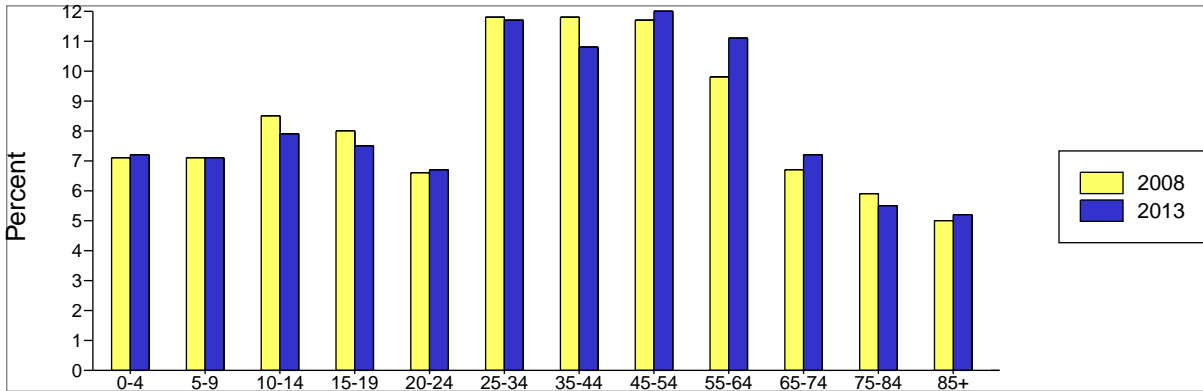
Latitude: 33.815102  
Longitude: -88.546616  
Radius: 1.0 mile

Site Type: Radius

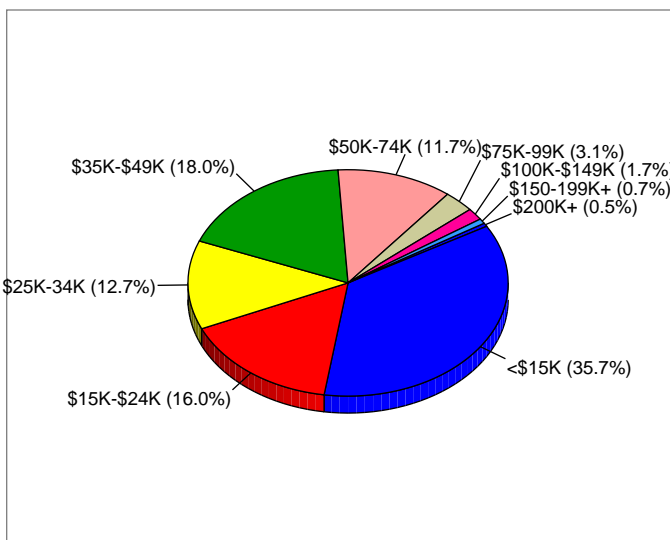
Trends 2008-2013



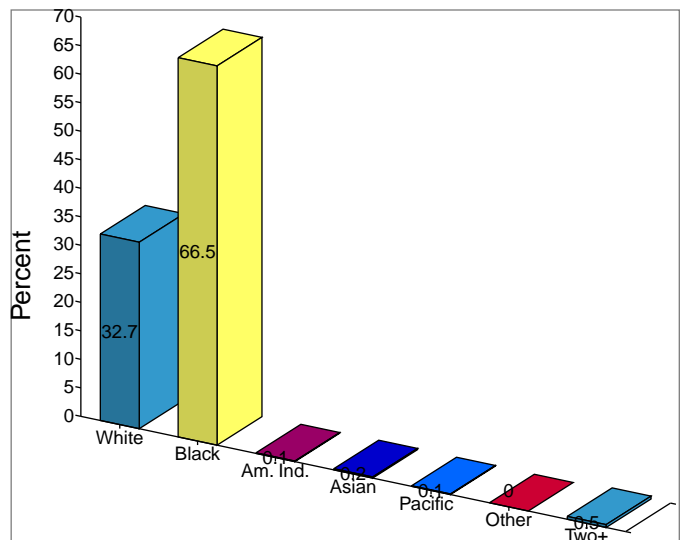
Population by Age



2008 Household Income



2008 Population by Race



2008 Percent Hispanic Origin: 0.5%



# Demographic and Income Profile

Prepared by Tri-Oak Commercial Group

DG - Aberdeen, MS  
317 Ushy 45  
Aberdeen, MS 39730

Latitude: 33.815102  
Longitude: -88.546616  
Radius: 3.0 mile

Site Type: Radius

Summary	2000	2008	2013
Population	6,524	6,369	6,316
Households	2,427	2,434	2,436
Families	1,696	1,659	1,633
Average Household Size	2.59	2.52	2.50
Owner Occupied HUs	1,585	1,583	1,571
Renter Occupied HUs	842	851	865
Median Age	34.0	35.2	36.0

Trends: 2008-2013 Annual Rate	Area	State	National
Population	-0.17%	0.83%	1.23%
Households	0.02%	1.02%	1.26%
Families	-0.32%	0.75%	1.05%
Owner HHs	-0.15%	0.84%	1.07%
Median Household Income	1.77%	1.92%	3.19%

Households by Income	2000		2008		2013	
	Number	Percent	Number	Percent	Number	Percent
< \$15,000	891	36.6%	807	33.1%	767	31.5%
\$15,000 - \$24,999	398	16.4%	396	16.3%	367	15.1%
\$25,000 - \$34,999	359	14.7%	284	11.7%	264	10.8%
\$35,000 - \$49,999	306	12.6%	380	15.6%	425	17.4%
\$50,000 - \$74,999	319	13.1%	368	15.1%	378	15.5%
\$75,000 - \$99,999	98	4.0%	116	4.8%	142	5.8%
\$100,000 - \$149,999	41	1.7%	58	2.4%	68	2.8%
\$150,000 - \$199,000	16	0.7%	16	0.7%	13	0.5%
\$200,000+	6	0.2%	10	0.4%	13	0.5%
Median Household Income	\$22,557		\$25,542		\$27,885	
Average Household Income	\$30,247		\$34,266		\$36,325	
Per Capita Income	\$11,553		\$13,478		\$14,447	

Population by Age	2000		2008		2013	
	Number	Percent	Number	Percent	Number	Percent
0 - 4	460	7.1%	466	7.3%	466	7.4%
5 - 9	572	8.8%	461	7.2%	459	7.3%
10 - 14	577	8.8%	527	8.3%	489	7.7%
15 - 19	542	8.3%	508	8.0%	474	7.5%
20 - 24	394	6.0%	419	6.6%	428	6.8%
25 - 34	803	12.3%	790	12.4%	774	12.3%
35 - 44	855	13.1%	761	11.9%	701	11.1%
45 - 54	727	11.1%	792	12.4%	788	12.5%
55 - 64	562	8.6%	639	10.0%	723	11.4%
65 - 74	450	6.9%	438	6.9%	454	7.2%
75 - 84	373	5.7%	338	5.3%	317	5.0%
85+	208	3.2%	232	3.6%	242	3.8%

Race and Ethnicity	2000		2008		2013	
	Number	Percent	Number	Percent	Number	Percent
White Alone	2,541	38.9%	2,341	36.8%	2,306	36.5%
Black Alone	3,921	60.1%	3,967	62.3%	3,948	62.5%
American Indian Alone	6	0.1%	6	0.1%	6	0.1%
Asian Alone	22	0.3%	21	0.3%	21	0.3%
Pacific Islander Alone	3	0.0%	3	0.0%	3	0.0%
Some Other Race Alone	4	0.1%	4	0.1%	4	0.1%
Two or More Races	28	0.4%	28	0.4%	28	0.4%
Hispanic Origin (Any Race)	37	0.6%	37	0.6%	37	0.6%

Data Note: Income is expressed in current dollars.

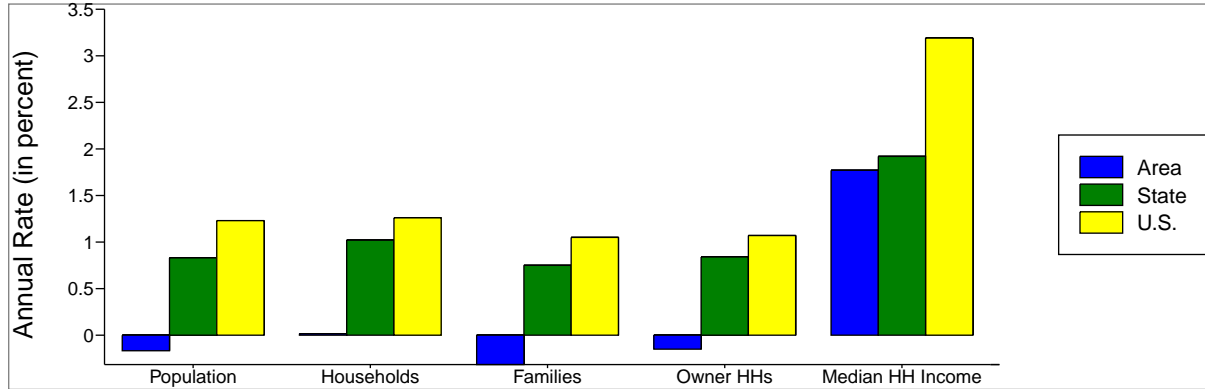
Source: U.S. Bureau of the Census, 2000 Census of Population and Housing. ESRI forecasts for 2008 and 2013.

DG - Aberdeen, MS  
317 Ushy 45  
Aberdeen, MS 39730

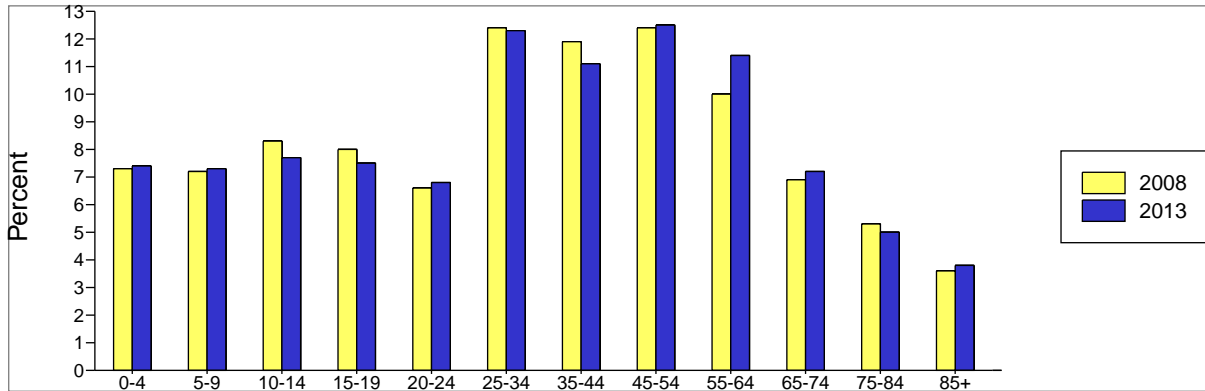
Latitude: 33.815102  
Longitude: -88.546616  
Radius: 3.0 mile

Site Type: Radius

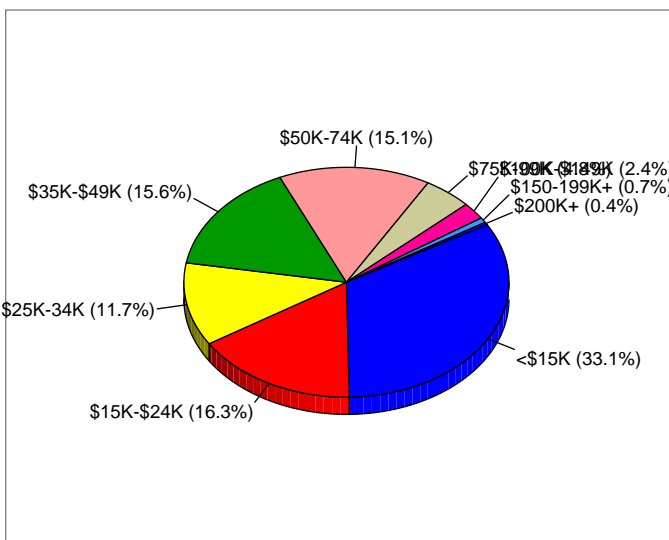
Trends 2008-2013



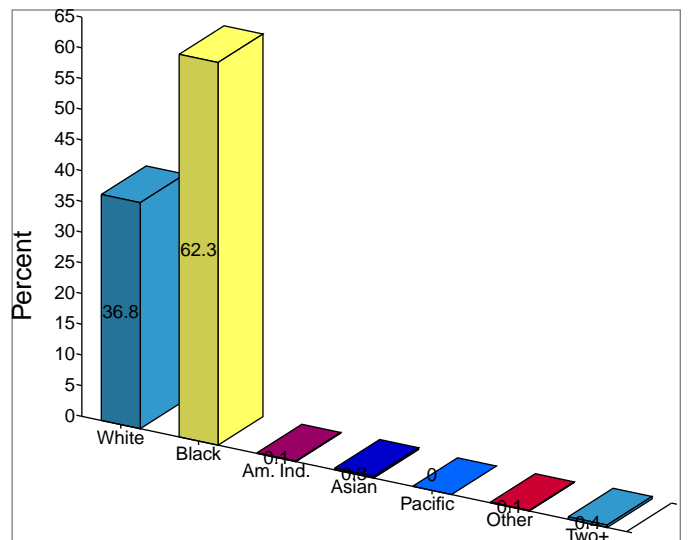
Population by Age



2008 Household Income



2008 Population by Race



2008 Percent Hispanic Origin: 0.6%



# Demographic and Income Profile

Prepared by Tri-Oak Commercial Group

DG - Aberdeen, MS  
317 Ushy 45  
Aberdeen, MS 39730

Latitude: 33.815102  
Longitude: -88.546616  
Radius: 5.0 mile

Site Type: Radius

Summary	2000	2008	2013
Population	7,988	7,848	7,797
Households	3,032	3,065	3,075
Families	2,153	2,125	2,099
Average Household Size	2.56	2.48	2.46
Owner Occupied HUs	2,074	2,094	2,086
Renter Occupied HUs	958	971	989
Median Age	33.9	35.3	36.2

Trends: 2008-2013 Annual Rate	Area	State	National
Population	-0.13%	0.83%	1.23%
Households	0.07%	1.02%	1.26%
Families	-0.25%	0.75%	1.05%
Owner HHs	-0.08%	0.84%	1.07%
Median Household Income	1.35%	1.92%	3.19%

Households by Income	2000		2008		2013	
	Number	Percent	Number	Percent	Number	Percent
< \$15,000	1,026	33.8%	927	30.3%	880	28.6%
\$15,000 - \$24,999	476	15.7%	466	15.2%	434	14.1%
\$25,000 - \$34,999	481	15.8%	396	12.9%	345	11.2%
\$35,000 - \$49,999	421	13.9%	491	16.0%	562	18.3%
\$50,000 - \$74,999	424	14.0%	505	16.5%	525	17.1%
\$75,000 - \$99,999	130	4.3%	161	5.3%	198	6.4%
\$100,000 - \$149,999	52	1.7%	80	2.6%	96	3.1%
\$150,000 - \$199,000	21	0.7%	23	0.8%	18	0.6%
\$200,000+	8	0.3%	14	0.5%	17	0.6%
Median Household Income	\$25,298		\$29,303		\$31,332	
Average Household Income	\$31,928		\$36,353		\$38,727	
Per Capita Income	\$12,089		\$14,132		\$15,223	

Population by Age	2000		2008		2013	
	Number	Percent	Number	Percent	Number	Percent
0 - 4	569	7.1%	580	7.4%	578	7.4%
5 - 9	687	8.6%	571	7.3%	566	7.3%
10 - 14	698	8.7%	636	8.1%	598	7.7%
15 - 19	667	8.4%	614	7.8%	583	7.5%
20 - 24	486	6.1%	513	6.5%	520	6.7%
25 - 34	998	12.5%	987	12.6%	956	12.3%
35 - 44	1,073	13.4%	960	12.2%	887	11.4%
45 - 54	912	11.4%	1,001	12.8%	997	12.8%
55 - 64	698	8.7%	807	10.3%	917	11.8%
65 - 74	542	6.8%	540	6.9%	563	7.2%
75 - 84	428	5.4%	387	4.9%	370	4.7%
85+	229	2.9%	252	3.2%	262	3.4%

Race and Ethnicity	2000		2008		2013	
	Number	Percent	Number	Percent	Number	Percent
White Alone	3,390	42.4%	3,188	40.6%	3,158	40.5%
Black Alone	4,523	56.6%	4,584	58.4%	4,564	58.5%
American Indian Alone	6	0.1%	6	0.1%	6	0.1%
Asian Alone	26	0.3%	26	0.3%	26	0.3%
Pacific Islander Alone	3	0.0%	3	0.0%	3	0.0%
Some Other Race Alone	6	0.1%	6	0.1%	6	0.1%
Two or More Races	34	0.4%	34	0.4%	34	0.4%
Hispanic Origin (Any Race)	45	0.6%	45	0.6%	45	0.6%

Data Note: Income is expressed in current dollars.

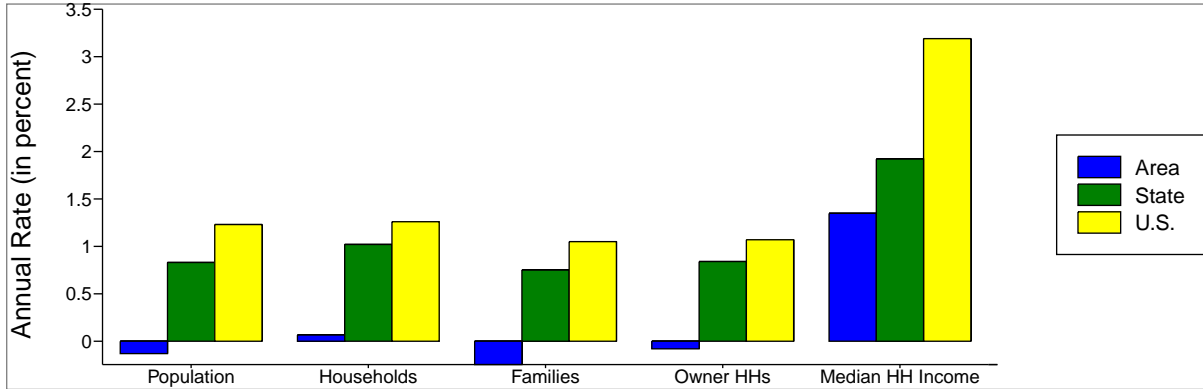
Source: U.S. Bureau of the Census, 2000 Census of Population and Housing. ESRI forecasts for 2008 and 2013.

DG - Aberdeen, MS  
317 Ushy 45  
Aberdeen, MS 39730

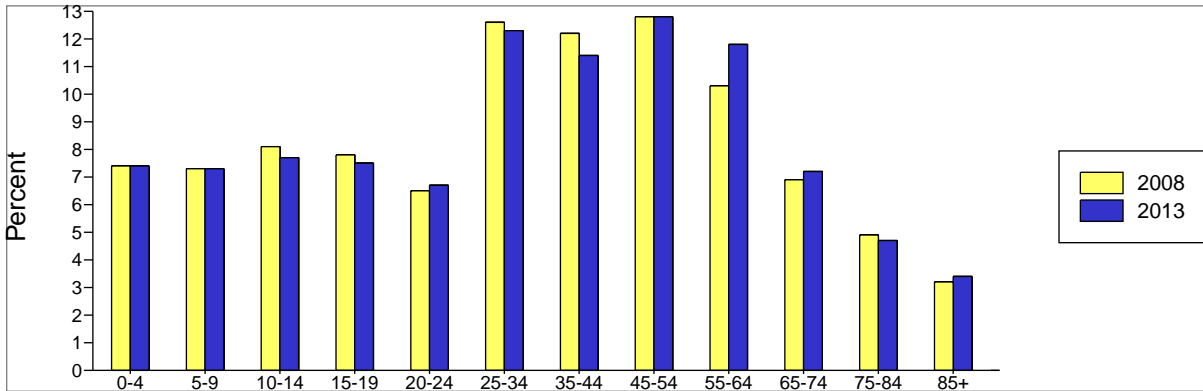
Latitude: 33.815102  
Longitude: -88.546616  
Radius: 5.0 mile

Site Type: Radius

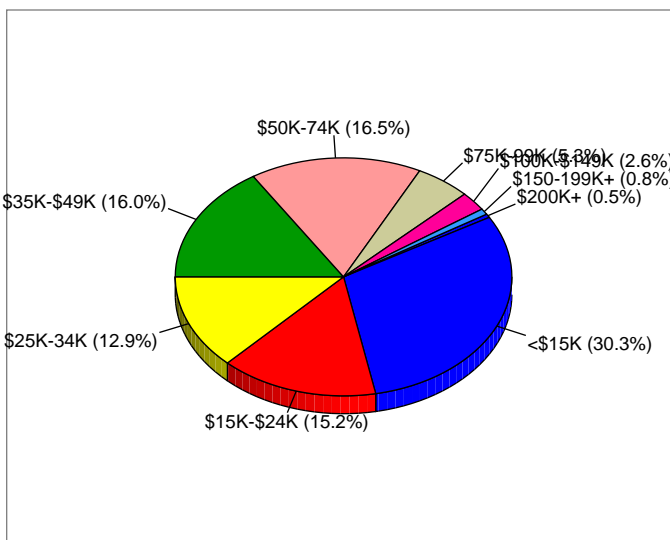
Trends 2008-2013



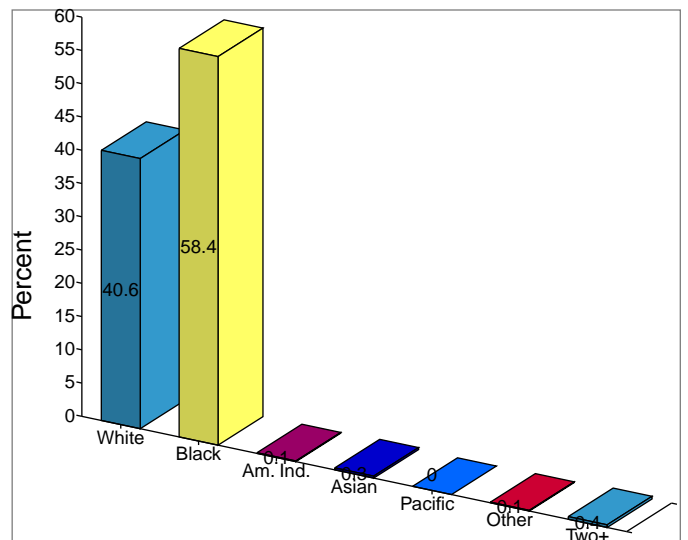
Population by Age



2008 Household Income



2008 Population by Race



2008 Percent Hispanic Origin: 0.6%